

**vax™**  
**ONE**  
**PWR**  
CORDLESS

vax™  
**BLADE 3**



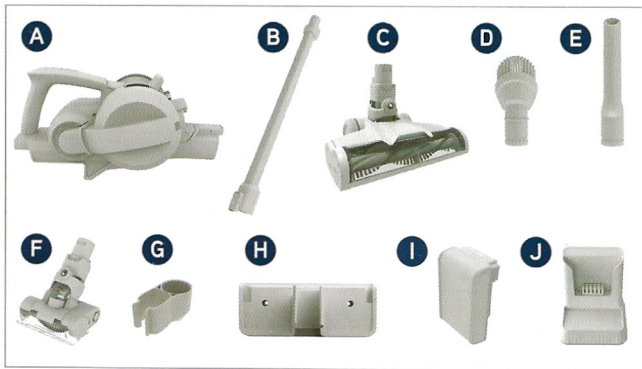
**CORDLESS VACUUM**

**QUICK START GUIDE**

CLSV-B3KP

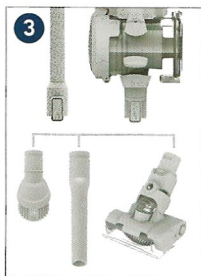


# 1. INCLUDED



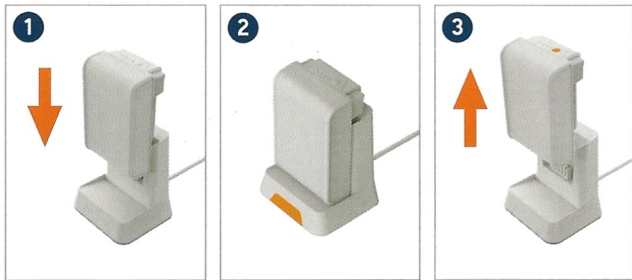
- A** Main Unit
- B** Reach Wand
- C** Powered Floorhead
- D** Dusting Brush
- E** Crevice Tool
- F** Mini Motorised Pet Tool
- G** Tool Caddy
- H** Wall Mount
- I** ONEPWR 3.0 Ah Battery
- J** ONEPWR Charger

## 2. ASSEMBLY




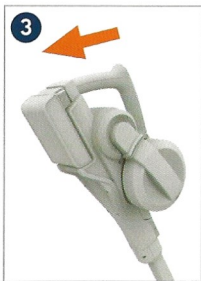
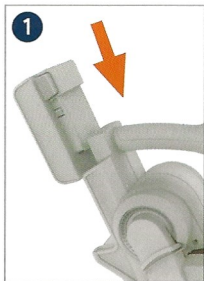
- 1 Attach the handheld and powered floorhead to each end of the reach wand until they both click into place.
- 2 Push the tool caddy onto the reach wand and slot the crevice tool into place.
- 3 The accessories can be attached directly onto the handheld or the reach wand for hard to reach areas and above floor cleaning.

### 3. CHARGING THE BATTERY



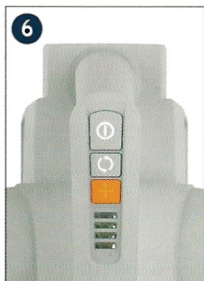
**THIS MACHINE IS ONLY TO BE USED WITH VAX ONEPWR BATTERIES AND CHARGERS. PLEASE READ THE SAFETY GUIDE BEFORE USE.**

- 1** Slide the battery down on to the charger.
  - 2** The charger light will flash white to show when the battery is charging. The light on the charger will stop flashing and go off when the battery is fully charged.
  - 3** Slide the battery off the charger to remove.
-  To check the battery charge level press the battery symbol.



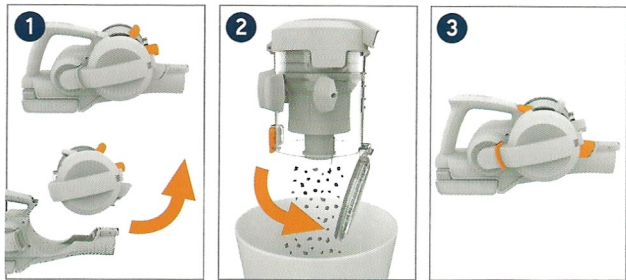
- 1** Slide the battery into the handheld until it clicks into place.
- 2** Place your foot on the powered floorhead.
- 3** Pull the handle backwards to recline.

## 5. OPERATION



- 4** Press the on/off button to switch the machine on.
- 5** Press the brushbar on/off button to switch the brushbar on the powered floorhead or mini motorised tool on.
- 6** Press the boost button on to increase the suction for particularly dirty areas.

## 6. EMPTYING THE DIRT CONTAINER



- 1** Squeeze the latch on the dirt container to release. Tilt and lift to remove from the handheld.
- 2** Hold the dirt container over a bin and press the dirt release button to allow dirt and debris to fall out. To close, push the dirt release door until it clicks into place.
- 3** When correctly fitted all 3 connection points will be aligned and will sit flush.

For how-to videos, warranty registration  
or to download the user guide visit

**[www.vax.co.uk](http://www.vax.co.uk)**

**[info@vax.co.uk](mailto:info@vax.co.uk)   [vax.co.uk](http://vax.co.uk)**

VAX Ltd, Artillery House, Heritage Way, Droitwich, WR9 8YB, UK.